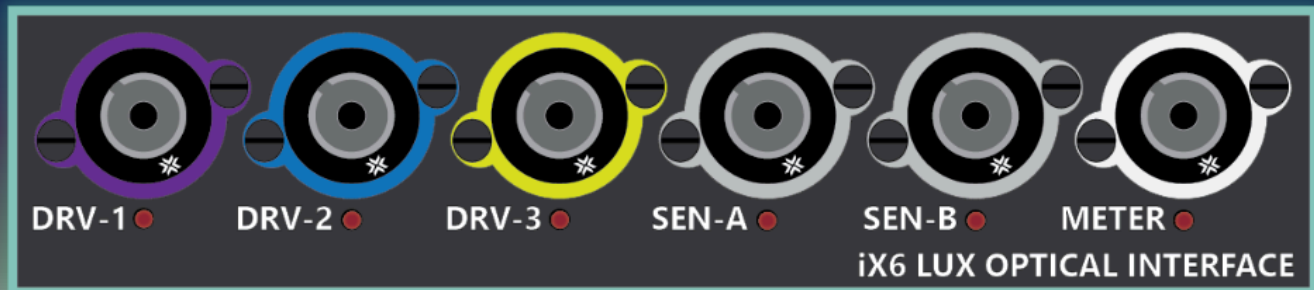


IX6 - FIBER PHOTOMETRY

A Member of the iCon Family of Devices



iX6 Fiber Photometry Lux Module

The iX6 brings the power and flexibility of TDT's popular RZ10X processor to the iCon family. It features integrated LUX LEDs and Photosensors that plug into its front panel enabling three-color fiber photometry. Multiple iX6 devices can be employed to facilitate multi-site and multi-subject recording. Use with TDT's LxM optical manifolds for a turn-key system with unparalleled sensitivity and versatility. The iX6 uses TDT's *Lux* line of interchangeable LEDs and Sensors for unparalleled flexibility for your calcium imaging and optogenetics experiments. Easily and cost-effectively change LEDs/wavelengths as the biological sensors in your research change over time.

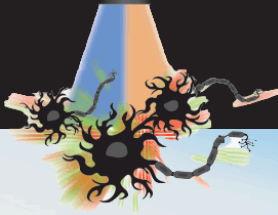
Features

- Three LED outputs
- Two photosensor inputs
- Integrated power meter
- 100% Lux compatible
- Easily configure and control with Synapse

Applications

- Operant Behavior Tasks
- Sleep Studies
- Addiction Studies
- Optogenetic Stimulation
- Brain-Gut Interaction (diabetes)
- Probing Neural Circuits

Have a question or would like to see a demo? Contact us today.

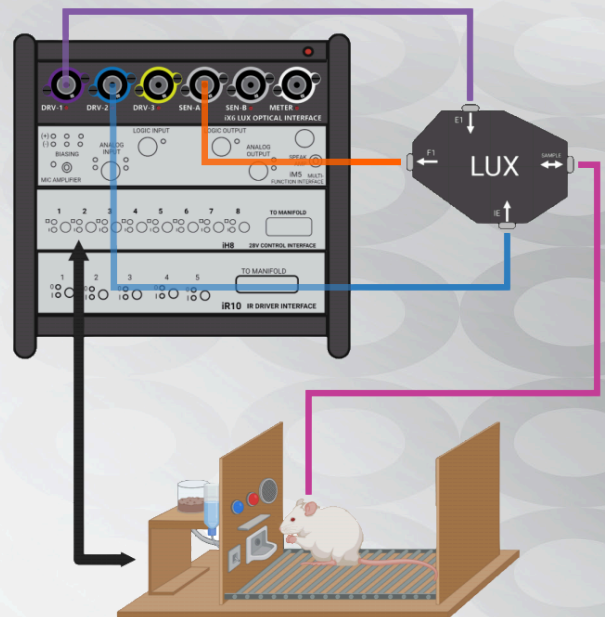


Synapse Software

Real-time demodulation and dF/F calculations, closed-loop optogenetic stimulation - Synapse can do it all. Every aspect of the iX6 is configurable with just a few mouse clicks. Go from unpacking to data collection in minutes. No complex coding required.

Behavioral Control and iX6 Recording:

Pynapse makes it easy to program event-based behavior and drive the iCon. Encoded states will change based on subject inputs via the iCon, other event outcomes, or timers. Information in Pynapse is easily accessible from MATLAB and Excel, and all data is saved into one log file for easy retrieval. Use Synapse and Pynapse to run self-administration and fear-conditioning tasks.



Base Specifications

LEDs

λ : 415 nm | 465 nm | 560 nm | 635 nm (opto)

PS3 Integrated Photosensor

Bandwidth: DC - 700 Hz

PM2 Power Meter

Range: 100 nW - 10 mW

LEGACY | INNOVATION | COMMITMENT

TDT has been pioneering neuroscience research tools since 1988

Every system comes with a 5-year warranty and free lifetime technical support