

TESTING THE zBUS TO PC INTERFACE CONNECTION

The zBUS Monitor program is a tool used to test the PC interface connection to System 3. It is installed in the C:\TDT\zDrv3 directory by default and a shortcut is added to the TDT Sys3 Directory in the Start menu.

The zBUSmon Window

When the utility is run a small monitor window is opened. All correctly connected zBUS or built-in device chassis housing a programmable device, such as the RP2 and PA5, are represented in the system diagram. Chassis housing non-programmable devices, such as the SM5 or HB7 are not displayed.

The microcode version number will appear in red if any device is programmed with microcode older than the currently installed release. For RZ devices, {DSP ERROR} is displayed in red if a DSP is expected but not identified.

Reboot System!

The Reboot System! button resets hardware and reloads device drivers.

Hardware Reset!

The Hardware Reset! button resets connected hardware.

Flush zBus!

The Flush zBus! button flushes the interface line of commands or data.

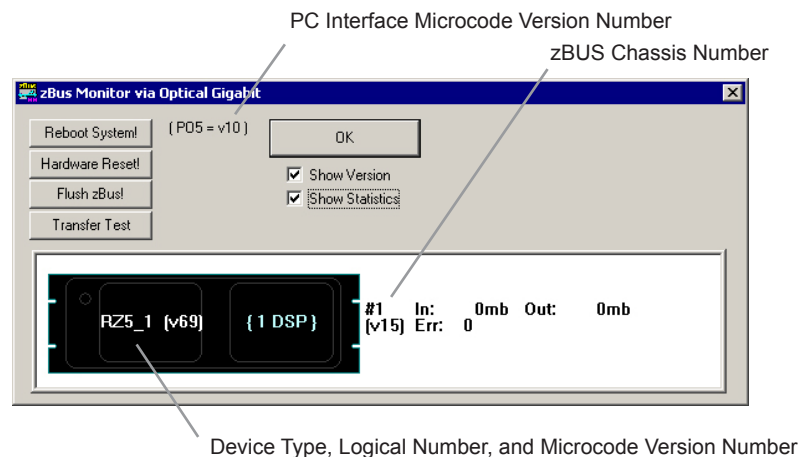
Transfer Test

The Transfer Test button tests communication between the TDT modules and the PC using a memory read and write test. This will test data transfer both to and from the PC. A status bar is displayed indicating how much time is remaining in the test. Click anywhere in the zBUSmon window to end the test early.

Show Version Check Box

When the Show Version box is checked, the version number of each programmable device's firmware (TDT Microcode) are displayed in the hardware diagram. The microcode version number is shown within parentheses next to each device. For processor devices, the version number shown should be the same as the version number of the TDT Drivers installed on the PC (Note: this does not occur in the PA5). The RP2.1 and the RL2 have a 1 in front of the microcode version number.

Microcode and driver version numbers should always be the same. Microcode versions displayed with red text are significantly outdated (such as versions older than v62) and should be updated immediately.

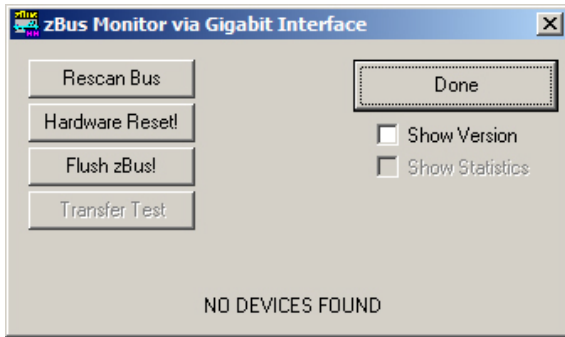


Show Statistics

The zBUSmon program, when used with the Optical Gigabit interface, provides an additional option to view system statistics. When Show Statistics is checked, the window expands to display the amount of data transferred and error codes if necessary. Rebooting the system, resetting the hardware, or cycling power on the zBUS racks will reset the data in the expanded window.

Rescan Bus

If no device is found when zBUSmon is run, a NO DEVICES FOUND message is displayed in place of a system diagram and the Rescan Bus button is displayed. This button can be used to scan for devices that have been connected or turned on after zBUSmon was launched.



Viewing Microcode Version for all DSPs on an RZ Device

If an RZ device has more than one DSP, the system diagram displays the number of DSPs and the microcode version for the first DSP.

To confirm the microcode version for each DSP:

1. Right-click the device in the diagram.
2. Click **RZ DSP Details** on the shortcut menu.

The DSP Version list is displayed.



3. Click OK to close the pop-up window.

Programming a Device from the System Diagram

The DSP microcode for programmable devices can be updated or reprogrammed using the RPProg utility. zBUSmon can launch RPProg and automatically select the desired device for you.

To program a device:

1. Right click the device in the system diagram.
2. Click **Program {device name}** on the shortcut menu.

The RPProg utility is launched. See the RPProg - Microcode Update Utility section in the System 3 Manual for information on using the utility.

